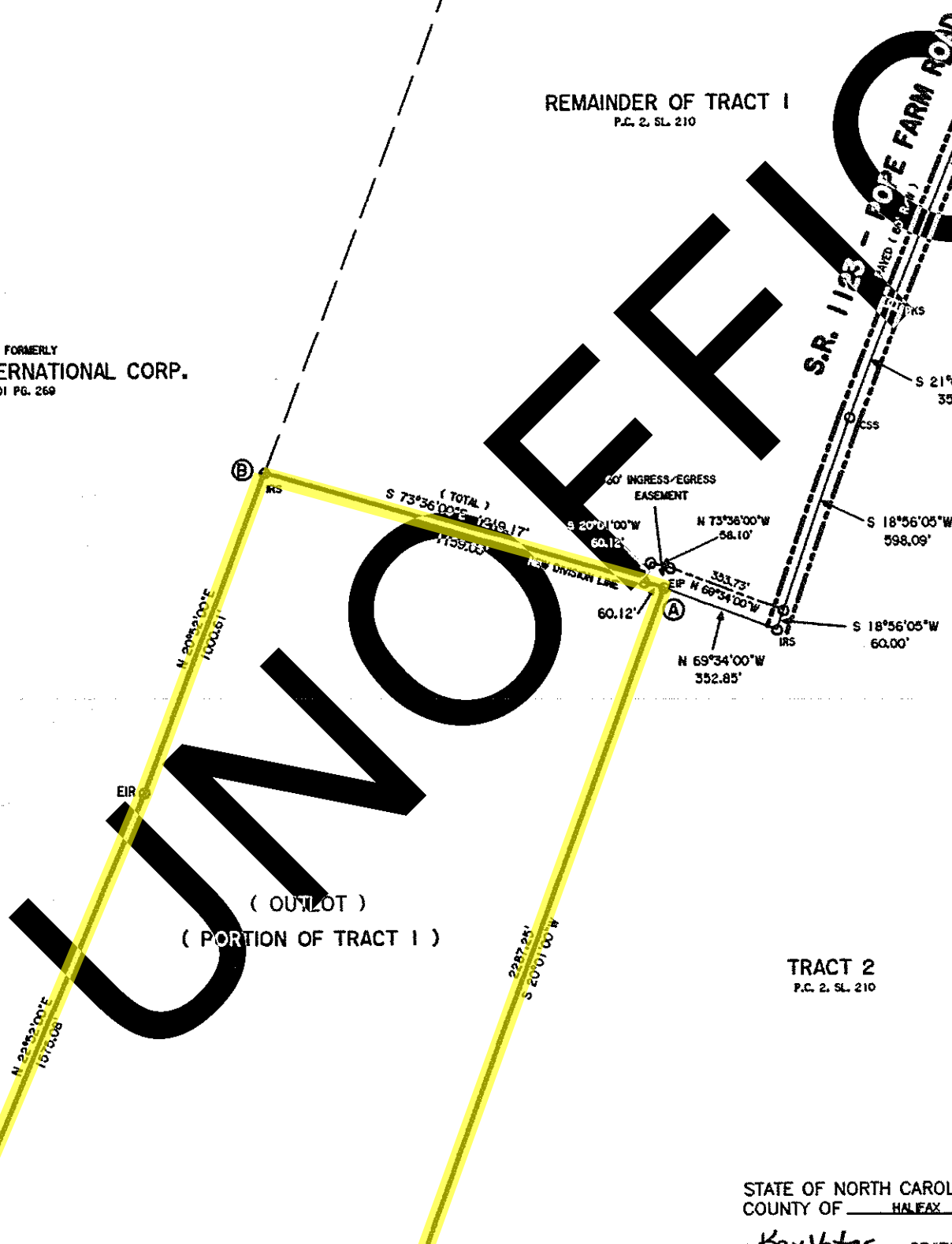


NOW OR FORMERLY  
CHAMPION INTERNATIONAL CORP.  
D.B. 601 PG. 269

REMAINDER OF TRACT 1  
P.C. 2, SL. 210

S.R. 1123 - POPE FARM ROAD



( OUTLOT )  
( PORTION OF TRACT 1 )

TRACT 2  
P.C. 2, SL. 210

STATE OF NORTH CAROLINA  
COUNTY OF HALIFAX

I, Kay Yates, REVIEW  
OF HALIFAX COUNTY, CERTIFY  
MAP OR PLAT TO WHICH THIS CERTIFICATE  
AFFIXED MEETS ALL STATUTORY  
REQUIREMENTS FOR RECORDING.

NOW OR FORMERLY  
ROBERT W. EDMONDS  
D.B. 299 PG. 275

NOW OR FORMERLY  
JAMES E. EDMONDS

N 81°54'00"W  
185.52'

NOW OR FORMERLY  
HENRY J. LEGGETT

Kay Yates  
REVIEWER  
DATE: \_\_\_\_\_