




Preliminary Soils Evaluation
 Bill Kemp
 Josey Williams Road
 Harnett County

*Not a Survey
 (sketched from public records)

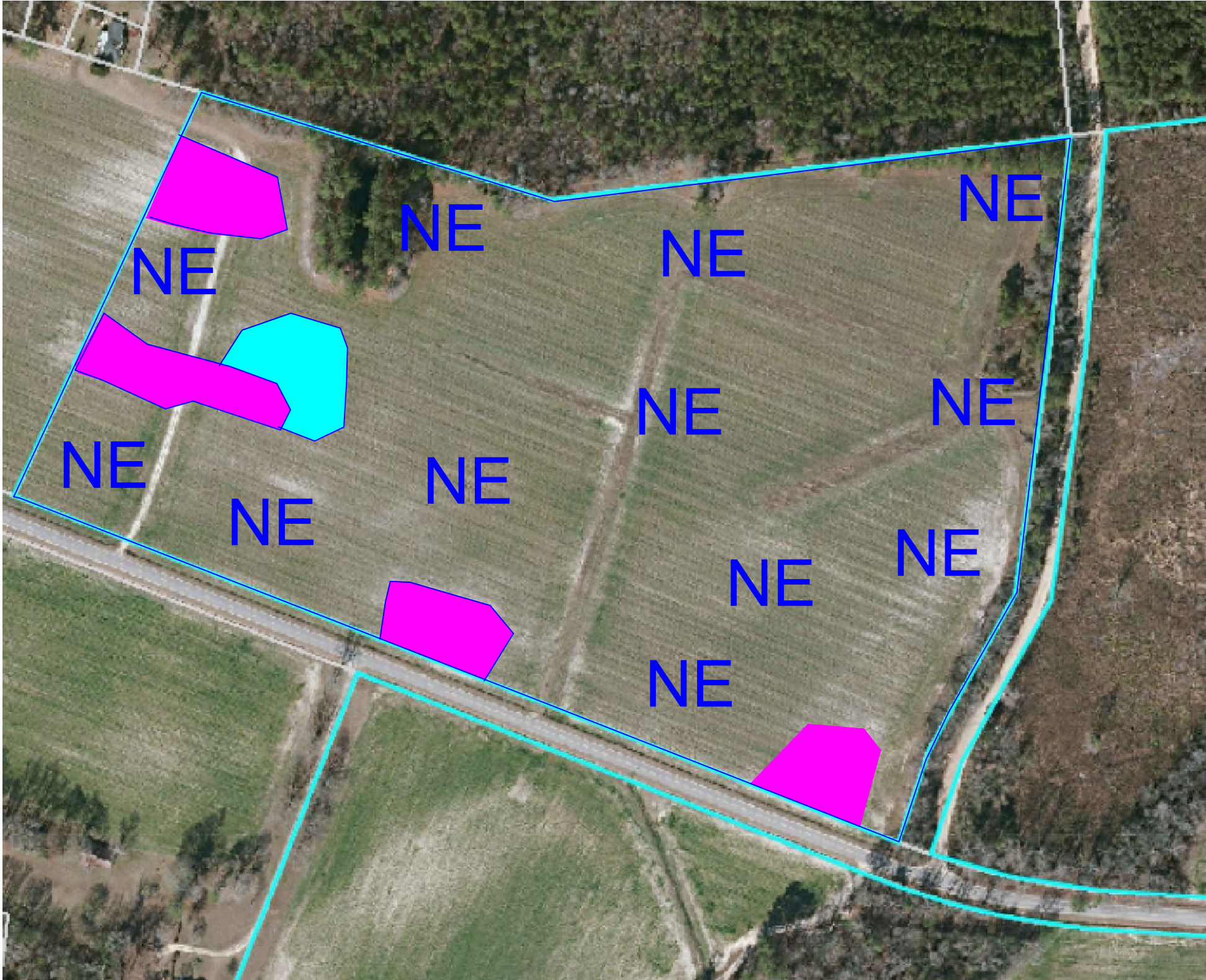
Legend

 Areas contain soils with 30 inches or more of useable material and have potential for conventional, modified conventional, LPP or ultra-shallow conventional septic systems. There may be inclusion of soils 24-29 inches to a restrictive horizon that will have potential for LPP septic systems.

 Areas contain soils with 20 inches or more of useable material and have potential for ultra-shallow conventional, LPP, drip, or or ultra-shallow conventional septic systems.

 Areas Not Evaluated

- *Preliminary Soils Evaluation
- *Not a Survey (sketched from public records).
- *Septic system setbacks listed below for new lots.
 - 1) 10' from property lines.
 - 2) 100' from wells for primary and repair systems.
 - 3) 50' from surface waters (streams, ponds, lakes).
- *Any mechanical disturbances such as grading, cutting and filling of the suitable soil areas can render areas unsuitable for future septic areas.
- *See accompanying report for additional information.
- *Base map sketched from preliminary plat map
- *Due to Soil Variability, Adams Soil Consulting cannot guarantee that the areas shown as suitable will be permitted by the local Health Department.
- *A more detailed soil evaluation should ber performed prior to further subdivision.



GRAPHIC SCALE
 1" = 200'





Adams
 Soil Consulting
 919-414-6761
 Project #879

Preliminary Soils Evaluation
 Bill Kemp
 Josey Williams Road
 Harnett County

*Not a Survey
 (sketched from public records)

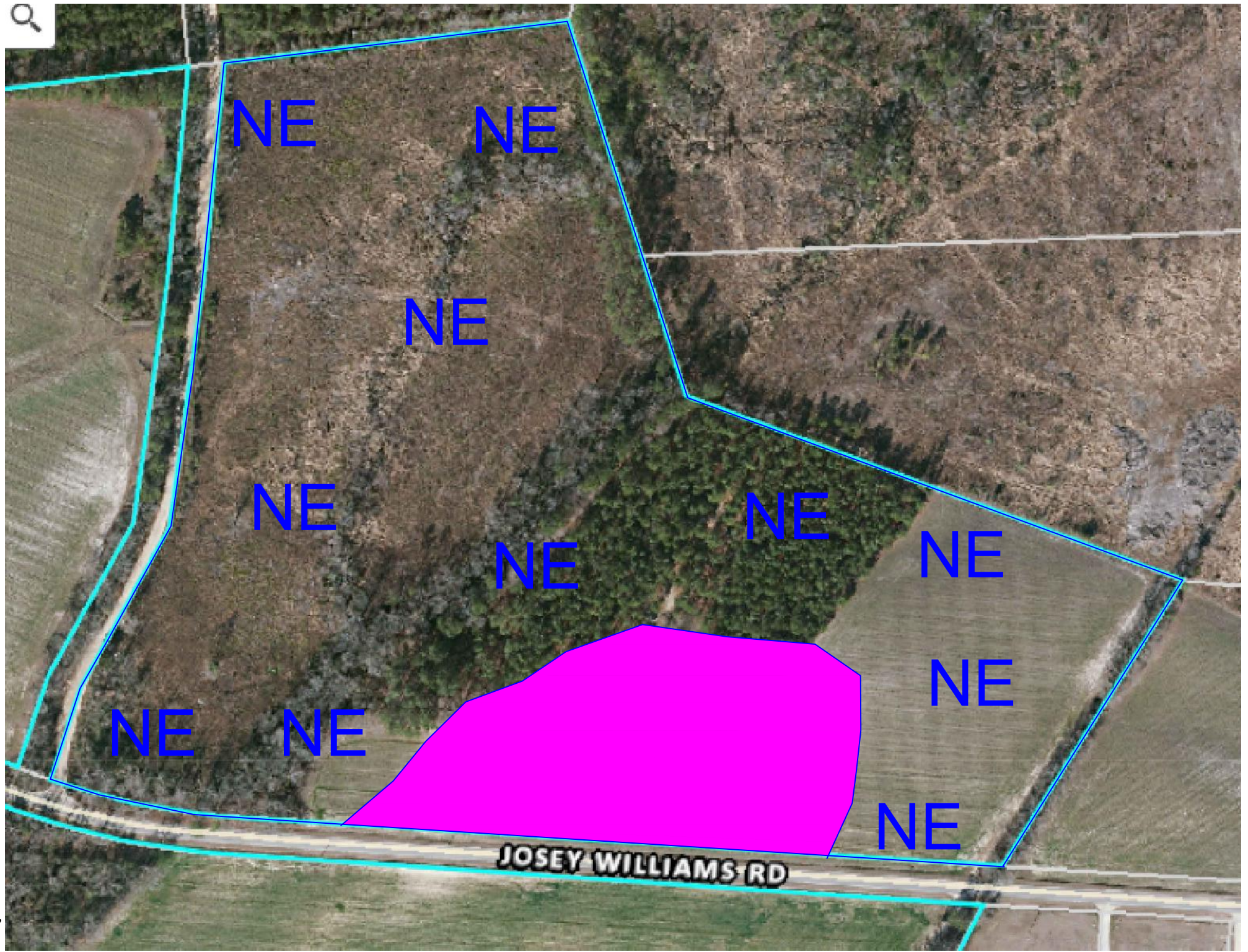
Legend

 Areas contain soils with 30 inches or more of useable material and have potential for conventional, modified conventional, LPP or ultra-shallow conventional septic systems. There may be inclusion of soils 24-29 inches to a restrictive horizon that will have potential for LPP septic systems.

 Areas contain soils with 20 inches or more of useable material and have potential for ultra-shallow conventional, LPP, drip, or or ultra-shallow conventional septic systems.

NE Areas Not Evaluated

- *Preliminary Soils Evaluation
- *Not a Survey (sketched from public records).
- *Septic system setbacks listed below for new lots.
 - 1) 10' from property lines.
 - 2) 100' from wells for primary and repair systems.
 - 3) 50' from surface waters (streams, ponds, lakes).
- *Any mechanical disturbances such as grading, cutting and filling of the suitable soil areas can render areas unsuitable for future septic areas.
- *See accompanying report for additional information.
- *Base map sketched from preliminary plat map
- *Due to Soil Variability, Adams Soil Consulting cannot guarantee that the areas shown as suitable will be permitted by the local Health Department.
- *A more detailed soil evaluation should be performed prior to further subdivision.



GRAPHIC SCALE
 1" = 200'



Adams
 Soil Consulting
 919-414-6761
 Project #879