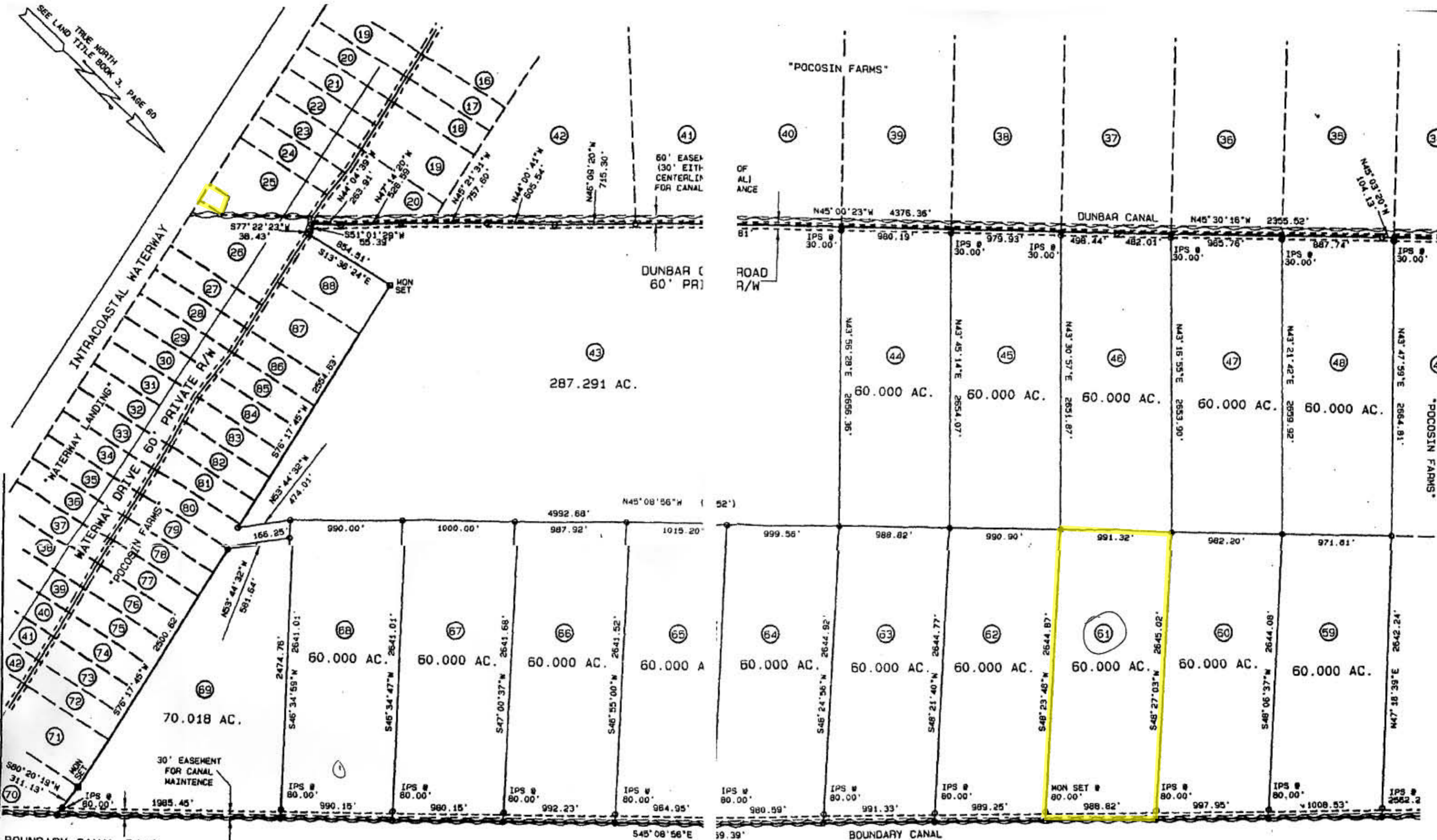


SEE LAND TITLE BOOK 3, PAGE 60  
TRUE NORTH

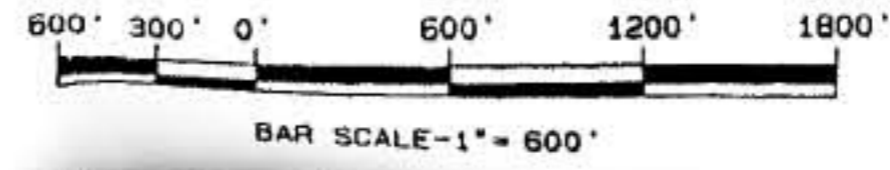


BOUNDARY CANAL ROAD  
60' PRIVATE R/W

U.S. FISH & WILDLIFE  
D.B. 135, F 99

**LEGEND**  
 — LINE SURVEYED  
 ● IRON PIN FOUND

NOTE: IRON PINS SET ON LINE 30' FROM CENTERLINE OF 60' PRIVATE R/W'S UNLESS OTHERWISE NOTED.



FILED in HYDE County, NC  
 on Aug 11 1997 at 4:31:57 PM  
 by Lora Mooney Byrd Register of Deeds

C/340  
 C/56