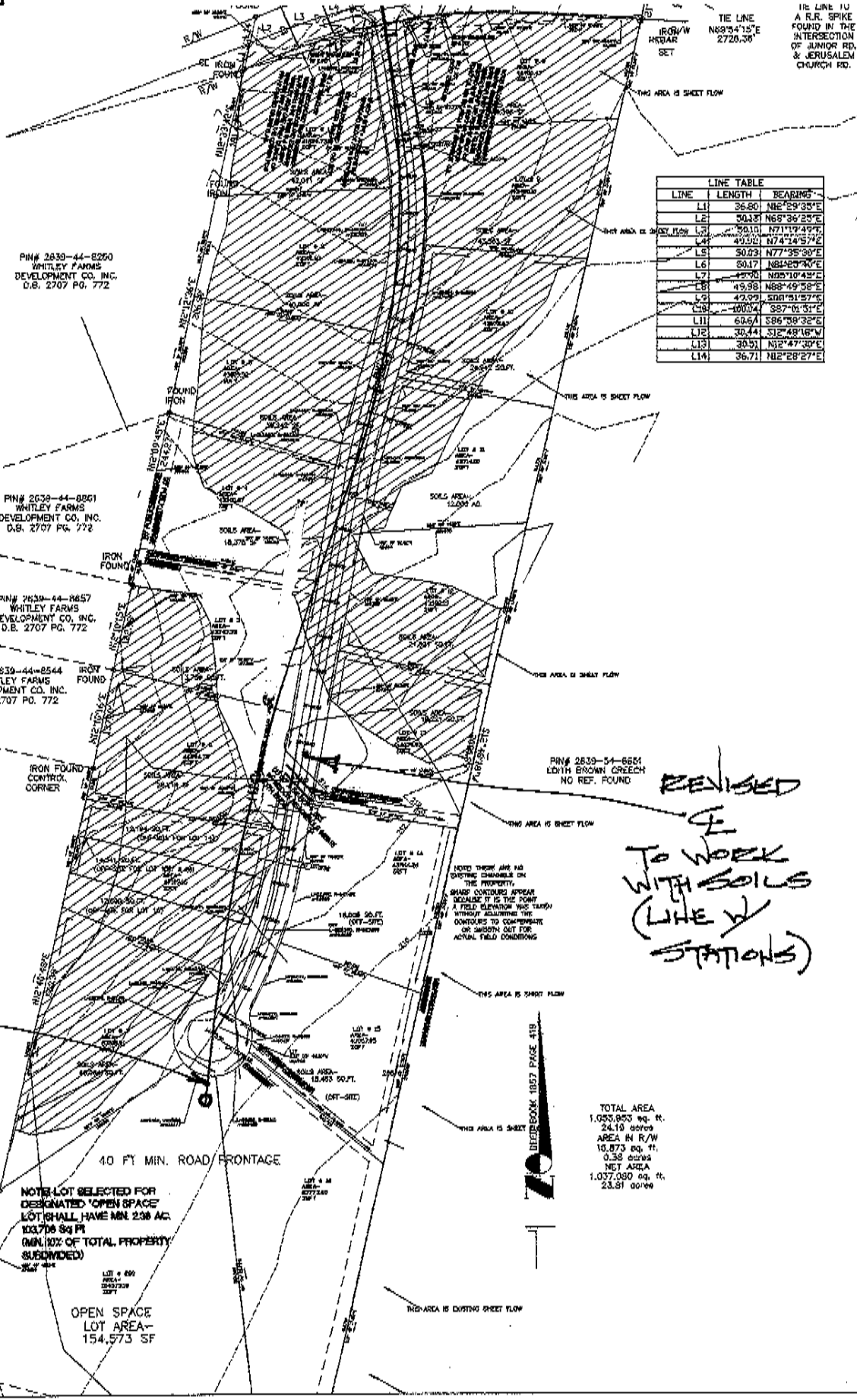


1" = 200'



LINE	LENGTH	BEARING
L1	36.80	N82°59'35"E
L2	30.18	N65°36'25"E
L3	50.15	N71°19'49"E
L4	45.92	N74°24'57"E
L5	50.23	N77°35'30"E
L6	50.17	N81°23'30"E
L7	42.90	N85°10'43"E
L8	49.98	N88°49'58"E
L9	42.99	S88°51'27"E
L10	40.04	S87°01'31"E
L11	60.64	S86°39'32"E
L12	30.44	S12°48'16"W
L13	30.51	N12°47'30"E
L14	36.71	N12°28'27"E

PIN# 2639-44-8250  
WHITLEY FARMS  
DEVELOPMENT CO. INC.  
D.B. 2707 PG. 772

PIN# 2639-44-8251  
WHITLEY FARMS  
DEVELOPMENT CO. INC.  
D.B. 2707 PG. 772

PIN# 2639-44-8257  
WHITLEY FARMS  
DEVELOPMENT CO. INC.  
D.B. 2707 PG. 772

PIN# 2639-44-8544  
WHITLEY FARMS  
DEVELOPMENT CO. INC.  
D.B. 2707 PG. 772

IRON FOUND  
CORNER

PIN# 2639-44-8254  
JIMMY COLIN GATTEN  
D.B. 1570 PG. 894

CE AS  
STAKED  
(HEAVY  
LINE)

REVISED  
CE  
TO WORK  
WITH SOILS  
(LINE W/  
STATIONS)

NOTE: LOT SELECTED FOR  
DESIGNATED 'OPEN SPACE'  
LOT SHALL HAVE MIN. 238 AC.  
103,778 sq. ft.  
(MIN. 10% OF TOTAL PROPERTY  
SUBDIVIDED)

OPEN SPACE  
LOT AREA -  
154,573 SF

TOTAL AREA  
1,035,853 sq. ft.  
24.19 acres  
AREA IN R/W  
10,873 sq. ft.  
0.25 acres  
NET AREA  
1,037,080 sq. ft.  
23.81 acres

PIN# 2639-43-2777  
NITH BROWN CREECH  
D.B. 1228 PG. 349

IRON  
REBAR  
SET